

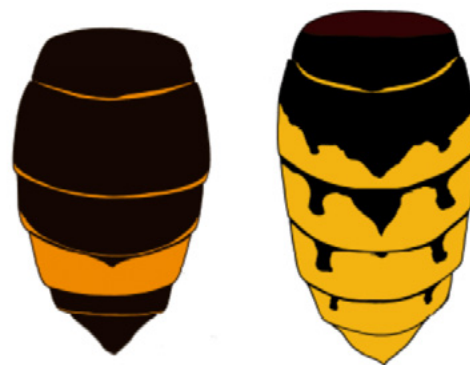
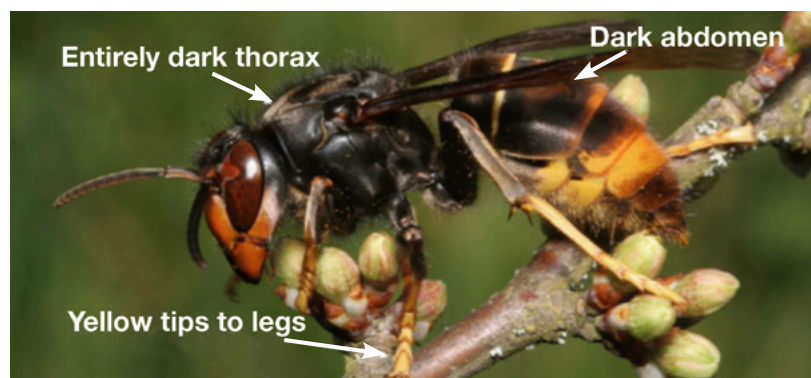
ASIAN HORNET

Vespa velutina

What is it? An invasive non-native hornet, originally from Asia. It is a highly aggressive predator of our native insects, especially honey bees and other pollinators. It was accidentally introduced to France in 2004 and is spreading rapidly and as of September 2016, it has been recorded in GB for the first time.



What can I do? If you suspect that you have seen one, **REPORT IT IMMEDIATELY!** Either by the Alien Watch tab on the Invasive Species Ireland website - www.invasivespeciesireland.com/alien-watch/ or CEDaR online recording - www2.habitas.org.uk/records/IS/



What does it look like?

- Distinctive hornet, smaller than the European hornet (1 record in Ireland).
- A key feature is the almost entirely dark abdomen, except for the 4th segment which is yellow (centre image above).
- Bright yellow tips to legs (European hornet dark) - see image above left.
- Entirely brown or black thorax (European more orange) - image far right.
- Makes very large distinctive nests - **DO NOT APPROACH IT IF YOU SUSPECT IT TO BE AN ASIAN HORNET NEST - REPORT IT IMMEDIATELY!**

Where might I see it?

- The Asian hornet is active during the day, between February and November.
- It may be seen in and around flowers, soil, timber and fruit, especially those of foreign import as they may have been hiding in them.
- It will actively seek out bee hives and may be seen in suburban areas or anywhere where populations of bees are present.